



# ROTO50.30SPLUSEE4



## PERFORMANCE AND FEATURES

## ROTO50.30SPLUSEE4

### PERFORMANCE

Total unladen weight (lb)	45195
Maximum capacity (lb)	11000
Lifting height (ft)	95' 8"
Maximum reach (ft)	83' 3"
Maximum operating height (ft)	37' 5"
Maximum operating reach (ft)	29' 5"
Capacity at maximum height (lb)	4000
Capacity at maximum reach (lb)	800
Lateral boom movement (inch)	-
Tilting correction (%)	± 12; ± 4
Boom sections	5

### POWERTRAIN

Turbo motor	FPT NEF45
Displacement/cylinders	4500/4
Engine Power (kW/HP)	125/170
Anti-pollution technology	TIER 4, DOC+SCR
Reversible fan	-
Maximum speed (mph)	25
Fuel tank (gal)	39.6
AdBlue tank (gal)	11.4
Hydrostatic transmission	● - 2V
EPD	●
Auto-revving joystick	●
Axles - Reducers	Axial, Epicyclic
Machine brakes	Dry discs
Automatic parking brake	●

### HYDRAULIC

Hydraulic pump	2 - LS + FS
Flow rate/pressure (gal/min - psi)	36,5 + 26,4 - 3626/3336
Hydraulic tank (gal)	31.7
Hydraulic outlet at the top of the boom	●
Rear hydraulic outlets	-

### CAB

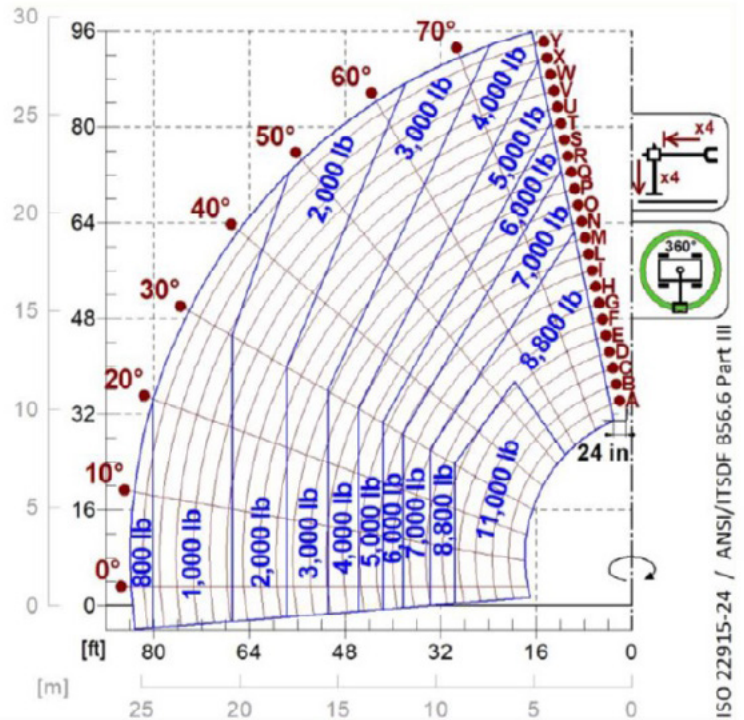
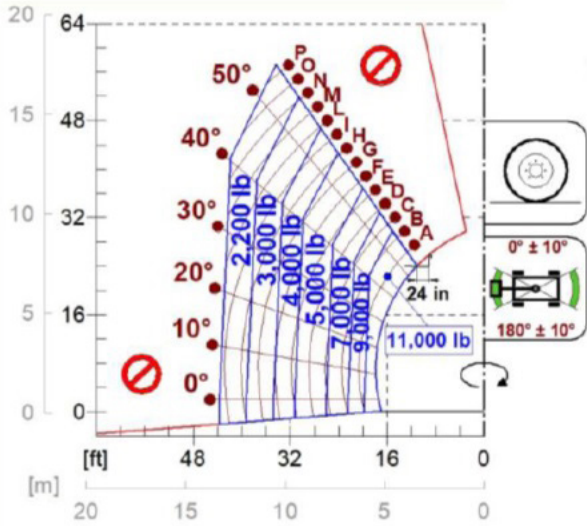
Cab configuration	Premium
ASCS Adaptive Stability Control System	Full
FOPS LIV II cab	●
ROPS cab	●
Cab commands	Electronic joystick control
Tilting Cab	●
Reverse shuttle	Dual Reverse

### CONFIGURATION

Cab suspension	-
Boom suspension	○
Suspension on axles	●
Work headlights on cab	○ - Led
Sun blind	●
Tac-lock	●
Provision for a platform	●
Two floating forks	●
Inching-Control	-
Four-wheel drive	●
Four-wheel steering	●
Three steering modes	●
Standard tyres	445/65-R22.5
Optional tyres	-
Stabilisers	Multiposition
Turret rotation	continuous
Type approval as an agricultural tractor	-
Approval with PNEUMATIC braking	-
Approval with HYDRAULIC braking	-
PTO	-
3-point linkage	-

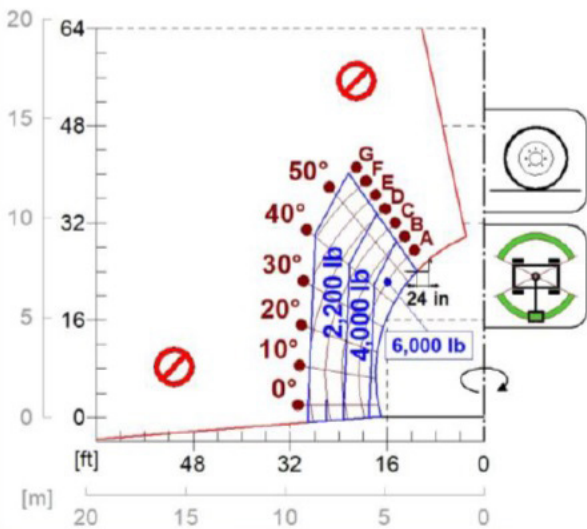
- Not Available. ● standard. ○ optional.

## LOAD CHARTS



ISO 22915-24 / ANSI/ITSDF 856.6 Part III

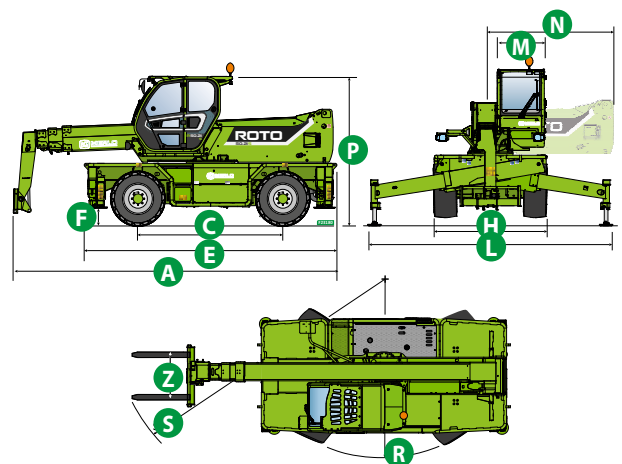
## ROTO50.30SPLUSEE4



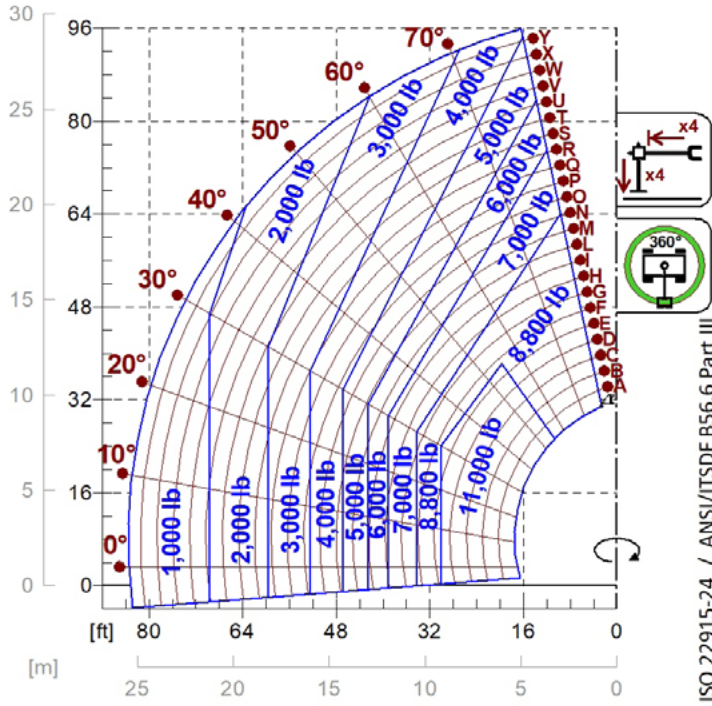
## DIMENSIONS

### ROTO 50.30 SPLUSEE4

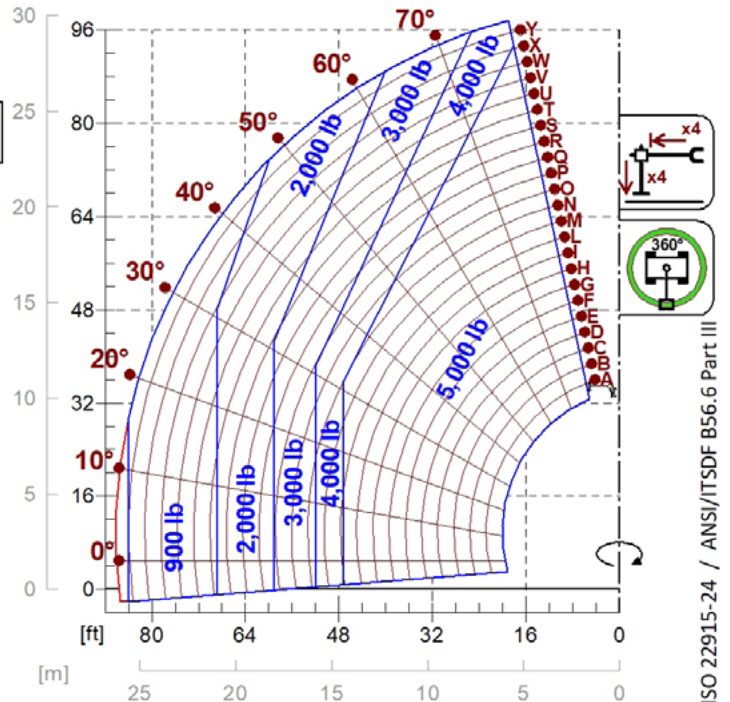
A (inch)	306.7		
C (inch)	126.0		
E (inch)	221.3		
F (inch)	11.4		
H (inch)	98.0		
L (inch)	-		
M (inch)	39.8		
N (inch)	-		
P (inch)	124.4		
R (inch)	177.2		
S (inch)	266.5		
Z (inch)	33.5		



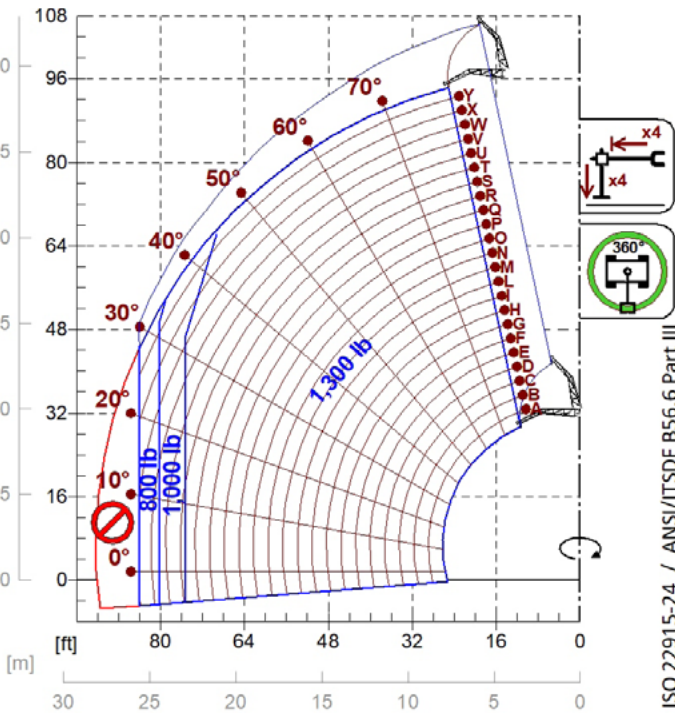
# LOAD CHARTS



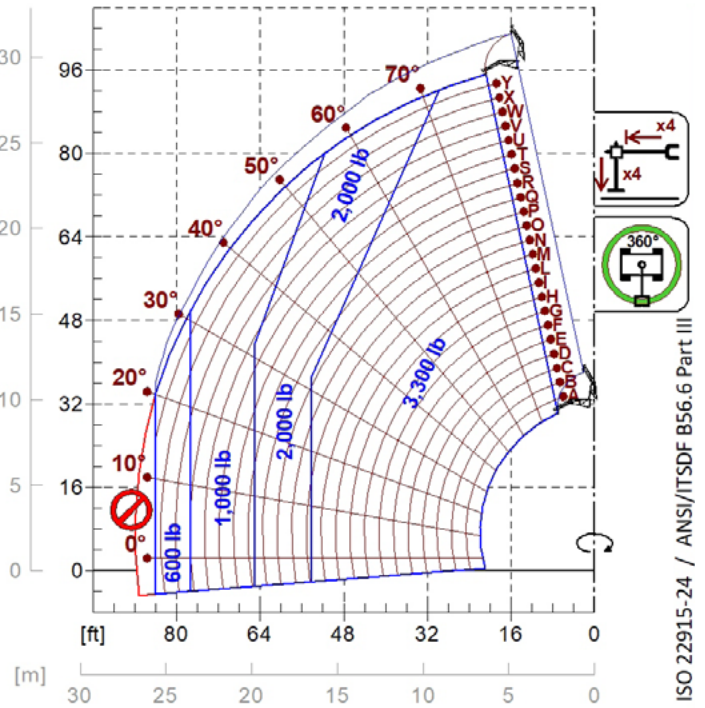
**A1000**



**A1118B**

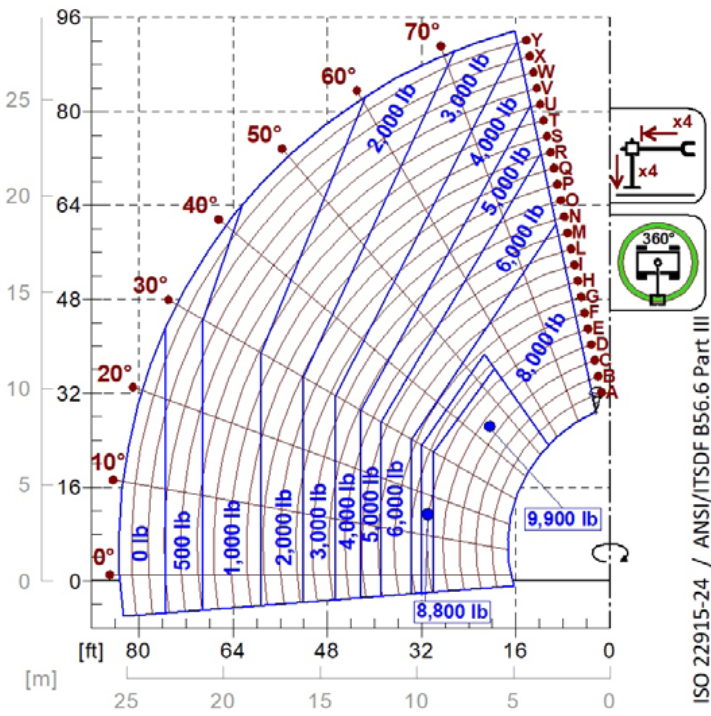


**A1200B**  
**A1300B**

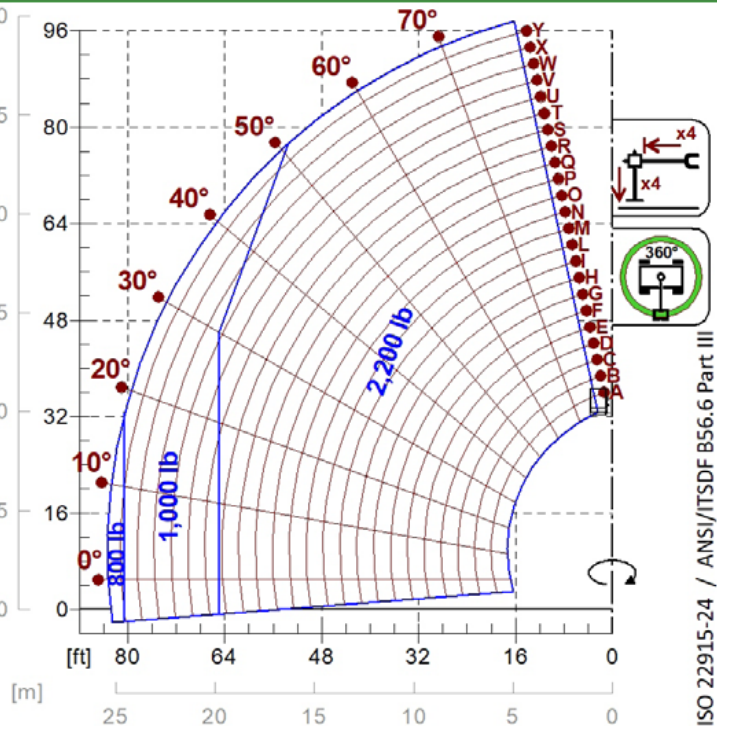


**A1210B**  
**A1310B**

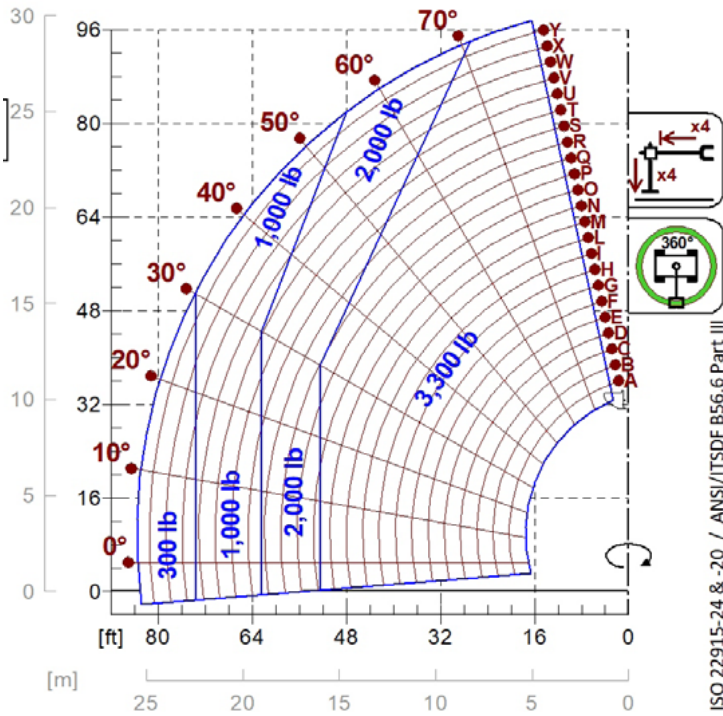
# LOAD CHARTS



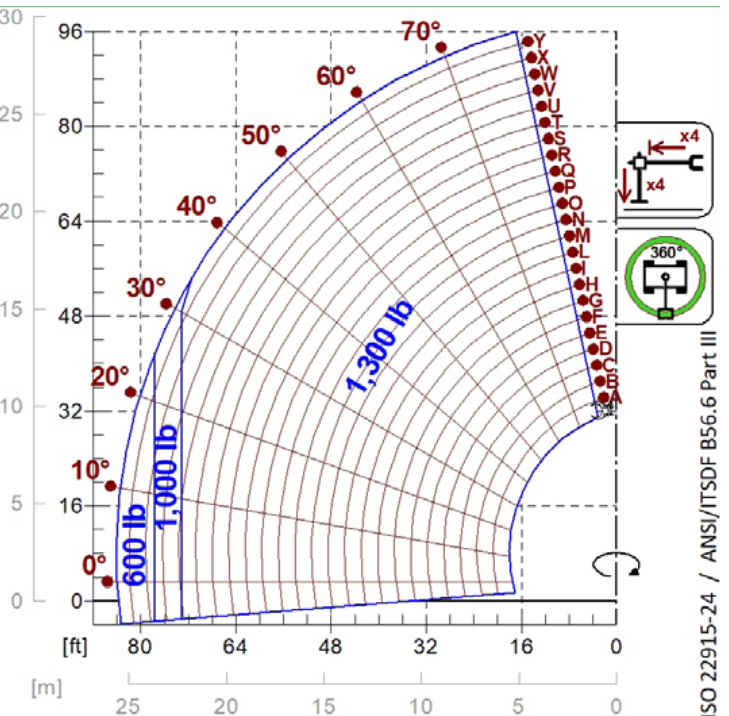
**A2765**  
**A2766**



**A1900**



**A0844**



**A2210**



**MERLO S.P.A.**  
Via Nazionale, 9  
12010 S. Defendente di Cervasca  
(Cuneo) Italia  
Tel. +39 0171 614111  
Fax +39 0171 684101

**info@merlo.com**  
**www.merlo.com**

**Your Merlo dealer**

DS\_ROT05030EE4 \_0721\_N.A.